



Roxtec-Durchführung CF 8/32 EMC

Durchführung mit Alurahmen für elektromagnetische Abschirmung bei hohen Kabeldichten.

Die Roxtec CF 8 EMC und CF 32 EMC sind Kabeleinführungsdichtungen, die die Abschirmleistung des Gehäuses aufrechterhalten sollen. Die Dichtungen schützen gefährdete Elektronikgeräte vor elektromagnetischen Bedrohungen. Die Durchführungen haben Rahmen aus nickelbeschichtetem Aluminium. Die Roxtec ES-Dichtungsmodule für die elektromagnetische Abschirmung sind an Kabel unterschiedlicher Größe anpassbar.



- Beständig gegen Nagetierverbiss
- Leichtgewicht
- Platzsparend
- Nimmt vorkonfektionierte Kabel auf

Produkteigenschaften



IP/UL NEMA



EMI-Schutz

Aufbau der Installation



Schaltschränke und Gehäuse

Klassifizierungen und Zertifikate

Dichtigkeit

- IP 66/67, UL/NEMA 4,4X,12,13

Belege

- Elektromagnetische Abschirmung
- Potentialausgleich

Rahmenmaße

mm/kg

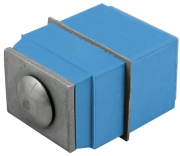
Die folgenden Rahmenvarianten zeigen eine begrenzte Auswahl. Das gesamte Angebot an Rahmen und Konfigurationen finden Sie unter [roxtec.com](https://www.roxtec.com).

Title	Rahmenöffnungen	Belegraum	Außenabmessungen WxHxD	Öffnungsmaße w x h	Gewicht	Art. Nr.
CF 8 EMC	1	40 x 80	75 x 140 x 69	61(+0.5/-0.5) x 127(+0.5/-0.5)	0.37	ECF0000080035
CF 32 EMC	2	40 x 160	130 x 230 x 69	110(+0.5/-0.5) x 216(+0.5/-0.5)	1.2	ECF0000320035

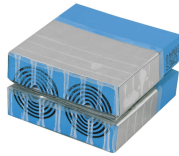


Daten der Abdichtungskomponenten

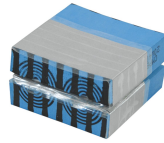
Dichtkomponenten



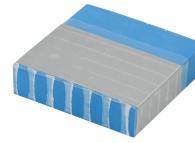
Roxtec-Kompression C EMC



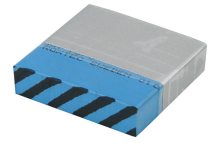
Roxtec-Module CM ES mit Multidiameter™



Roxtec-Module CM PE mit Multidiameter™



Roxtec-Füll- und Ausgleichmodul CM ES



Roxtec-Füll- und Ausgleichmodul CM PE



Gleitmittel

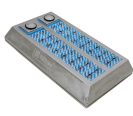
Weitere Informationen finden Sie unter www.roxtec.com.

Vorkonfigurierte Durchführungs-Kits

mm/kg



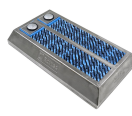
CF 8/8 ES



CF 32/32 ES



CF 8/8 PE



CF 32/32 PE

Title	Konfiguration	Außenabmessungen WxHxD	Öffnungsmaße w x h	Gewicht	Art. Nr.
CF 8/5 ES	4x (3.5-16.5), 1x (9.5-32.5)	75 x 140 x 75	61(+0.5/-0.5) x 127(+0.5/-0.5)	1	192363
CF 8/8 ES	8x (3.5-16.5)	75 x 140 x 75	61(+0.5/-0.5) x 127(+0.5/-0.5)	1	192364
CF 32/8 ES	8x (9.5-32.5)	130 x 230 x 75	110(+0.5/-0.5) x 216(+0.5/-0.5)	2.5	192365
CF 32/20 ES	16x (3.5-16.5), 4x (9.5-32.5)	130 x 230 x 75	110(+0.5/-0.5) x 216(+0.5/-0.5)	2.5	192366
CF 32/32 ES	32x (3.5-16.5)	130 x 230 x 75	110(+0.5/-0.5) x 216(+0.5/-0.5)	2.5	192367
CF 8/5 PE	4x (3.5-16.5), 1x (9.5-32.5)	75 x 140 x 69	61(+0.5/-0.5) x 127(+0.5/-0.5)	0.8	192368
CF 8/8 PE	8x (3.5-16.5)	75 x 140 x 69	61(+0.5/-0.5) x 127(+0.5/-0.5)	0.8	192369
CF 32/8 PE	8x (9.5-32.5)	130 x 230 x 69	110(+0.5/-0.5) x 216(+0.5/-0.5)	2.3	192370
CF 32/20 PE	16x (3.5-16.5), 4x (9.5-32.5)	130 x 230 x 69	110(+0.5/-0.5) x 216(+0.5/-0.5)	2.3	192371
CF 32/32 PE	32x (3.5-16.5)	130 x 230 x 69	110(+0.5/-0.5) x 216(+0.5/-0.5)	2.5	192372

The product information provided by Roxtec does not release the purchaser of the Roxtec system, or part thereof, from the obligation to independently determine the suitability of the products for the intended process, installation and/or use.

Roxtec gives no guarantee for the Roxtec system or any part thereof and assumes no liability for any loss or damage whatsoever, whether direct, indirect, consequential, loss of profit or otherwise, occurred or caused by the Roxtec systems or installations containing components not manufactured by an authorized manufacturer and/or occurred or caused by the use of the Roxtec system in a manner or for an application other than for which the Roxtec system was designed or intended.

Roxtec expressly excludes any implied warranties of merchantability and fitness for a particular purpose and all other express or implied representations and warranties provided by statute or common law. User determines suitability of the Roxtec system for intended use and assumes all risk and liability in connection therewith. In no event shall Roxtec be liable for indirect, consequential, punitive, special, exemplary or incidental damages or losses.

The Roxtec products are offered and sold in accordance with the conditions of the Roxtec General Terms of Sales. The latest version of the Roxtec General Terms of Sales can be downloaded from <https://www.roxtec.com/en/about-us/about-roxtec/general-terms-of-sales/>

We reserve the right to make changes to the product and technical information without further notice. Any errors in print or entry are no claims for indemnity. The content of this publication is the property of Roxtec International AB and is protected by copyright.

This document was generated on: 2024-04-20